



GROOVED COUPLINGS AND FITTINGS

100TONG[®] IOOT[®]
Weifang 100Tong Casting Co., Ltd.





Company profile

Weifang 100Tong Casting Co., Ltd, established in 2002, covering 70,000 square meters, lies in Weifang City-world kite capital, Shandong Province. There are more than 400 skillful workers, and annual output value has exceeded RMB 230 million since 2012.

100TONG is specialized in ductile iron grooved fittings and couplings, valves and coated steel pipes. The company has passed ISO9001 quality system, and grooved products has been approved by FM,UL,CE.

100TONG has five producing workshops: Auto-casting workshop, Hand molding casting workshop, Machining workshop, Painting workshop, and Moulding workshop. All grooved products are produced by the advanced casting toolings of electric furnace melting, auto-casting, and vermicularizing control. There are 6 CNC machines to make mouldings, 8 medium frequency furnaces, 4 auto-casting lines, more than 50 CNC lathes, 3 epoxy&painting lines, and the annual capacity has exceeded 50,000 tons.

100TONG as the Shandong well-known brand is enjoying high reputation among the customers for its faith, quality, price and service. Products are on sale all over 300 cities of China, and exported to the United State, Canada, Europe, Middle East, South Africa, Australia, and more than 30 countries and areas.

Service is no limit, unflagging pursuit of excellence. Weifang 100Tong Casting Co., Ltd will make unremitting pursuit towards future.



Export Countries

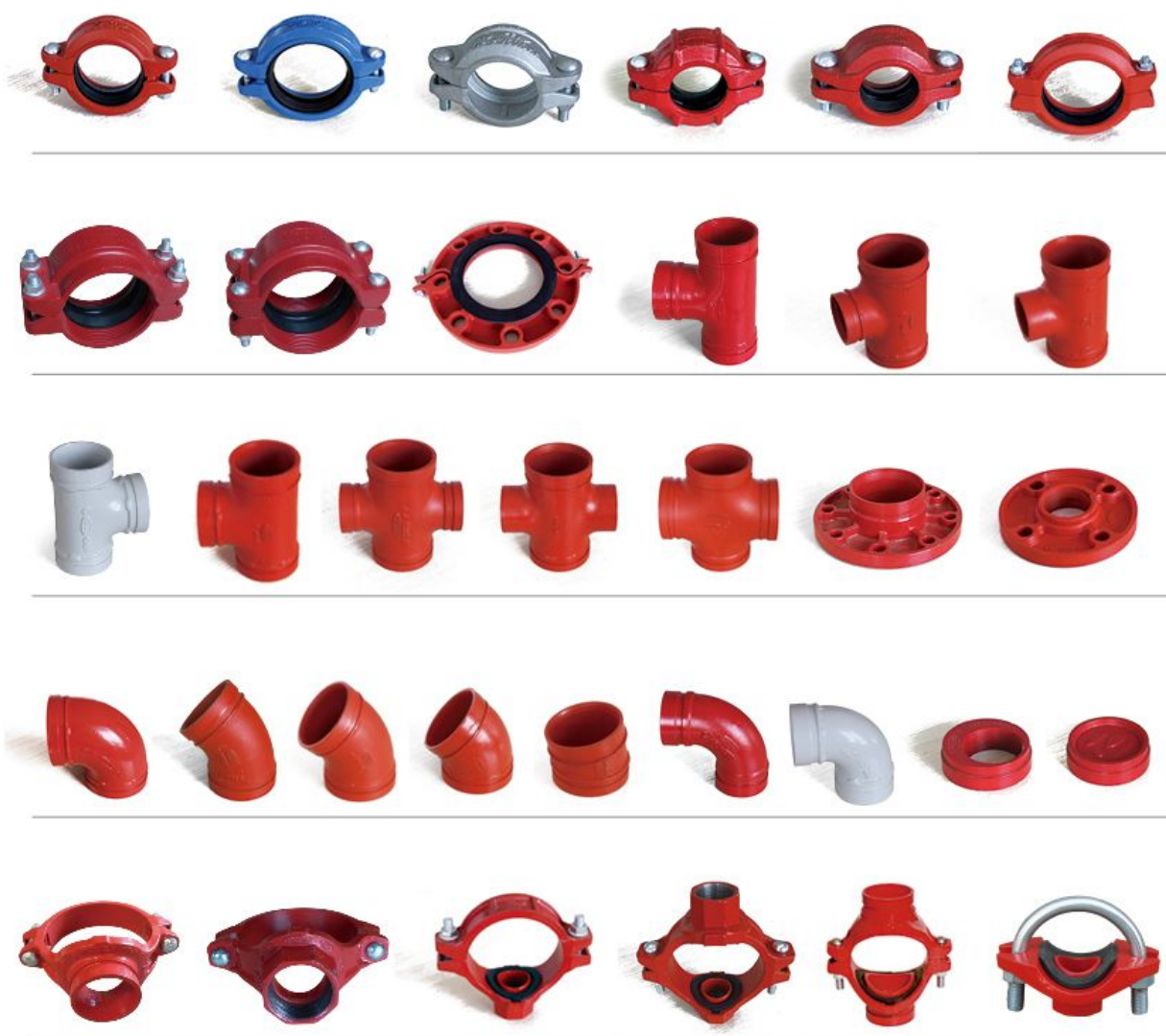


100Tong ductile iron casting conforming to ASTM A536 65-45-12 equal to QT450-12.

Coating: 1.painting 2.epoxy 3.dacromet 4.galvanized

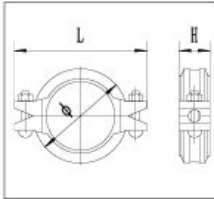
Color: 1.Red 2.Blue 3.White 4.Orange

Note:painting or epoxy coating are fit for water system at ordinary temperature if apply on other occasions,please contact 100TONG engineer.



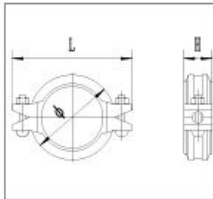
XGQT01

Rigid Coupling



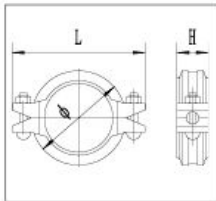
Nominal Size mm/in	Pipe O.D mm/in	Working Pressure PSI/MPa	Bolt Size No.-Size mm	Dimensions mm/in		
				Ø	L	H
25 1	33.7 1.327	500 3.45	2-M10x45	60 2.362	102 4.016	45 1.772
32 1¼	42.4 1.669	500 3.45	2-M10x45	70 2.756	106 4.173	44 1.732
40 1½	48.3 1.900	500 3.45	2-M10x45	73 2.874	108 4.252	44 1.732
50 2	57.0 2.245	500 3.45	2-M10x55	83 3.268	122 4.803	45 1.772
50 2	60.3 2.375	500 3.45	2-M10x55	87 3.425	123 4.843	44 1.732
65 2½	73.0 2.875	500 3.45	2-M10x55	100 3.937	138 5.433	44 1.732
65 2½	76.1 3.000	500 3.45	2-M10x55	103 4.055	142 5.591	45 1.772
80 3	88.9 3.500	500 3.45	2-M12x60	117 4.606	166 6.535	45 1.772
100 4	108.0 4.250	500 3.45	2-M12x65	137 5.393	188 7.401	48 1.889
100 4	114.3 4.500	500 3.45	2-M12x65	139 5.472	190 7.480	49 1.929
125 5	133.0 5.250	400 2.75	2-M12x75	163 6.417	210 8.268	49 1.929
125 5	139.7 5.500	400 2.75	2-M12x75	168 6.614	218 8.583	49 1.929
150 6	159.0 6.250	400 2.75	2-M12x75	192 7.559	242 9.528	49 1.929
150 6	165.1 6.500	400 2.75	2-M12x75	193 7.598	241 9.488	49 1.929
150 6	168.3 6.625	400 2.75	2-M12x75	198.5 7.815	249 9.803	50 1.969
200 8	219.1 8.625	300 2.07	2-M16x85	253 9.961	320 12.598	59 2.323
250 10	273 10.748	300 2.07	2-M22x130	335 13.189	426 16.772	68 2.677
300 12	323.9 12.752	300 2.07	2-M22x130	380 14.96	470 18.504	65 2.559

XGQT02 Flexible Coupling



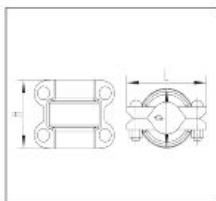
Nominal Size mm/in	Pipe O.D mm/in	Working Pressure PSI/MPa	Bolt Size No.-Size mm	Dimensions mm/in		
				Ø	L	H
25 1	33.7 1.327	500 3.45	2-M10x45	60 2.362	98 3.858	43.5 1.713
32 1¼	42.4 1.669	500 3.45	2-M10x45	67 2.638	106 4.173	44 1.732
40 1½	48.3 1.900	500 3.45	2-M10x45	73 2.874	108 4.252	44 1.732
50 2	57.0 2.245	500 3.45	2-M10x55	83 3.268	122 4.803	45 1.772
50 2	60.3 2.375	500 3.45	2-M10x55	87 3.425	123 4.843	44 1.732
65 2½	73.0 2.875	500 3.45	2-M10x55	100 3.937	138 5.433	44 1.732
65 2½	76.1 3.000	500 3.45	2-M10x55	103 4.055	142 5.591	45 1.772
80 3	88.9 3.500	500 3.45	2-M12x60	117 4.606	166 6.535	45 1.772
100 4	108.0 4.250	500 3.45	2-M12x65	137 5.393	188 7.401	48 1.889
100 4	114.3 4.500	500 3.45	2-M12x65	139 5.472	190 7.480	49 1.929
125 5	133.0 5.250	400 2.75	2-M12x75	163 6.417	210 8.268	49 1.929
125 5	139.7 5.500	400 2.75	2-M12x75	168 6.614	218 8.583	49 1.929
150 6	159.0 6.250	400 2.75	2-M12x75	190 7.48	239 9.409	49 1.929
150 6	165.1 6.500	400 2.75	2-M12x75	193 7.598	241 9.488	49 1.929
150 6	168.3 6.625	400 2.75	2-M12x75	198.5 7.815	249 9.803	50 1.969
200 8	219.1 8.625	300 2.07	2-M16x85	253 9.961	320 12.598	59 2.323
250 10	273 10.748	300 2.07	2-M22x130	317 12.48	401 15.787	63 2.48
300 12	323.9 12.752	300 2.07	2-M22x130	375 14.764	455 17.913	64 2.52
350 14	355.6 14	300 2.07	3-M22x130	418 16.457	508 20	74 2.913
350 14	377 14.843	300 2.07	3-M22x130	441 17.362	535 21.063	78 3.071
400 16	406.4 16	300 2.07	3-M22x130	467 18.386	567 22.323	78 3.071
400 16	425.5 16.752	300 2.07	2-M22x130	486 19.134	580 22.835	78 3.071

Shouldered Coupling



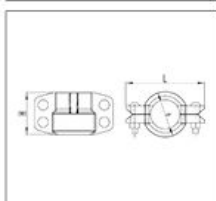
Nominal Size mm/in	Pipe O.D mm/in	Working Pressure PSI/MPa	Bolt Size No.-Size mm	Dimensions mm/in		
				Ø	L	H
50	60.3	500	2-M12x60	97	132	48
2	2.375	3.5		3.957	5.197	1.89
80	88.9	500	2-M12x75	125	170	48
3	3.500	3.5		4.921	6.692	1.89
100	114.3	500	2-M12x75	157	205	52
4	4.500	3.5		6.181	8.070	2.047
150	165.1	500	2-M16x85	213	272	52
6	6.500	3.5		8.386	10.708	2.047
200	219.1	500	2-M20x100	278	345	60
8	8.625	3.5		10.945	13.583	2.362
250	273	500	2-M22x130	340	415	64
10	10.748	3.5		13.38	16.339	2.52
300	323.9	500	2-M22x130	387	474	64
12	12.752	3.5		15.236	18.661	2.52
350	377	500	2-M22x130	438	518	76
14	14.843	3.5		17.244	20.394	2.992
400	425.5	500	2-M30x140	506	605	76
16	16.752	3.5		19.921	23.819	2.992

HDPE Coupling



Nominal Size mm/in	Pipe O.D mm/in	Working Pressure PSI/MPa	Bolt Size No.-Size mm	Dimensions mm/in		
				Ø	L	H
50	60.3	300	4-M12 x 60	83	120	116
2	2.375	2.07		3.268	4.724	4.567
	63	300	4-M10 x 55	89	116	105
	2.48	2.07		3.504	4.567	4.134
80	88.9	300	4-M12 x 75	114	166	118
3	3.5	2.07		4.5	6.535	4.647
	110	300	4-M12 x 75	137	180	110
	4.33	2.07		5.394	7.087	4.331
100	114	300	4-M12 x 75	143	201	147
4	4.5	2.07		5.63	7.913	5.787
	160	300	4-M12 x 75	188	235	118
	6.299	2.07		7.402	9.252	4.646
150	168.3	300	4-M16 x 85	202	252	150
6	6.626	2.07		7.953	9.921	5.906
200	219.1	300	4-M16 x 85	258	320	152
8	8.626	2.07		10.157	12.598	5.984
	252	300	4-M16 x 100	288	350	141
	9.921	2.07		11.339	13.780	5.551
250	273	300	4-M20 x 100	313	390	165
10	10.748	2.07		12.323	15.354	6.496
300	323.9	300	4-M20 x 120	367	455	183
12	10.748	2.07		14.449	17.913	7.205

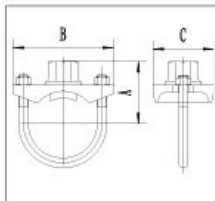
Transition HDPE couplings



Nominal Size mm/in	Pipe O.D mm/in	Working Pressure PSI/MPa	Bolt Size No.-Size mm	Dimensions mm/in		
				Ø	L	H
50	60.3	300	4-M10 x 55	84	146	78
2	2.375	2.07		3.307	5.748	3.071
80	88.9	300	4-M12 x 75	112	174	79
3	3.5	2.07		4.409	6.85	3.11
100	114	300	4-M12 x 75	142	208	95
4	4.5	2.07		5.591	8.189	3.74
150	168.3	300	4-M16 x 85	198	280	96
6	6.626	2.07		7.795	11.024	3.78
200	219.1	300	4-M16 x 85	260	342	107
8	8.626	2.07		10.236	13.465	4.213
250	273	300	4-M20 x 120	314	424	128
10	10.748	2.07		12.362	16.693	5.039
300	323.9	300	4-M20 x 120	368	470	129
12	10.748	2.07		14.488	18.504	5.079

XGQT03 U

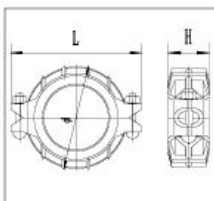
U-Bolted Mechanical Tee Threaded



Nominal Size mm/in	Pipe O.D mm/in	Working Pressure PSI/Mpa	U Bolt Size NO.-Sizemm	Dimensions mm/in			Hole cutting dimensions mm/in
				A	B	C	
25x15 1x1/2	33.7x21.3 1.327x0.839	300 2.07	M10x25	49 1.929	76 2.992	43 1.654	24 0.945
25x20 1x3/4	33.7x26.9 1.327x1.059	300 2.07	M10x25	58 2.283	84 3.307	43 1.693	24 0.945
32x15 1 1/4x1/2	42.4x21.3 1.669x0.839	300 2.07	M10x28.5	43 1.693	90 3.543	56 2.205	30 1.181
32x20 1 1/2x3/4	42.4x26.9 1.669x1.059	300 2.07	M10x28.5	45 1.772	90 3.543	56 2.205	30 1.181
32x25 1 1/4x1	42.4x33.7 1.669x1.327	300 2.07	M10x28.5	50 1.969	90 3.543	56 2.205	30 1.181
40x15 1 1/2x1/2	48.3x21.3 1.900x0.839	300 2.07	M10x28.5	43 1.693	93 3.661	59 2.323	30 1.181
40x20 1 1/2x3/4	48.3x26.9 1.900x1.059	300 2.07	M10x28.5	54 2.126	93 3.661	59 2.323	30 1.181
40x25 1 1/2x1	48.3x33.7 1.900x1.327	300 2.07	M10x28.5	58 2.283	93 3.661	59 2.323	30 1.181
50x15 2x1/2	60.3x21.3 2.375x0.839	300 2.07	M10x30	54 2.126	96 3.780	59 2.323	30 1.181
50x20 2x3/4	60.3x26.9 2.375x1.059	300 2.07	M10x30	56 2.205	96 3.780	59 2.323	30 1.181
50x25 2x1	60.3x33.7 2.375x1.327	300 2.07	M10x30	66 2.598	96 3.780	59 2.323	30 1.181
65x15	73.1x21.3 2.878x0.839	300 2.07	M10x30	60 2.362	110 4.331	59 2.323	30 1.181
65x20	73.1x26.9 2.878x1.059	300 2.07	M10x30	63 2.480	110 4.331	59 2.323	30 1.181
65x25	73.1x33.7 2.878x1.327	300 2.07	M10x30	70 2.756	110 4.331	59 2.323	30 1.181
65x15	76.1x21.3 2.996x0.839	300 2.07	M10x30	61 2.402	110 4.331	59 2.323	30 1.181
65x20	76.1x26.9 2.996x1.059	300 2.07	M10x30	67 2.638	110 4.331	59 2.323	30 1.181
65x25	76.1x33.7 2.996x1.327	300 2.07	M10x30	74 2.913	110 4.331	59 2.323	30 1.181

XGQT02 B

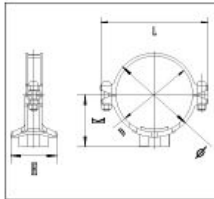
Reducing Flexible Coupling



Nominal Size mm/in	Pipe O.D mm/in	Working Pressure PSI/MPa	Bolt Size No.-Size mm	Dimensions mm/in		
				Ø	L	H
50*40 2*1 1/2	60.3*48.3 2.375*1.900	300 2.07	2-M10*55	90 3.543	129 5.079	47 1.850
65*40 2 1/2*1 1/2	73.0*48.3 2.874*1.900	300 2.07	2-M10*55	101 3.976	137 5.394	48 1.890
65*50 2 1/2*2	73.0*60.3 2.874*2.375	300 2.07	2-M10*55	101 3.976	137 5.394	48 1.890
65*40 2 1/2*1 1/2	76.1*48.3 2.996*1.900	300 2.07	2-M10*55	105 4.134	140 5.512	48 1.890
65*50 2*2	76.1*60.3 2.996*2.375	300 2.07	2-M10*55	105 4.134	140 5.512	48 1.890
80*40 3*1 1/2	88.9*48.3 3.500*1.900	300 2.07	2-M12*65	120 4.724	164 6.457	48 1.890
80*50 3*2	88.9*60.3 3.500*2.375	300 2.07	2-M12*65	120 4.724	164 6.457	48 1.890
80*65 3*2 1/2	88.9*73.0 3.500*2.874	300 2.07	2-M12*65	120 4.724	164 6.457	48 1.890
80*65 3*2 1/2	88.9*76.1 3.500*2.996	300 2.07	2-M12*65	120 4.724	164 6.457	48 1.890
100*40 4*1 1/2	114.3*48.3 4.500*1.900	300 2.07	2-M12*65	150 5.906	195 7.677	49 1.929
100*50 4*2	114.3*60.3 4.500*2.375	300 2.07	2-M12*65	150 5.906	195 7.677	49 1.929
100*65 4*2 1/2	114.3*73 4.500*2.874	300 2.07	2-M12*65	150 5.906	195 7.677	49 1.929
100*65 4*2 1/2	114.3*76.1 4.500*2.996	300 2.07	2-M12*65	150 5.906	195 7.677	49 1.929
100*80 4*3	114.3*88.9 4.500*3.500	300 2.07	2-M12*65	150 5.906	195 7.677	49 1.929
150*100 6*4	165.1*114.3 6.500*4.500	300 2.07	2-M12*75	203 7.992	235 9.252	50 1.969
150*80 6*3	168.3*88.9 6.625*3.500	300 2.07	2-M12*75	203 7.992	235 9.252	50 1.969
150*100 6*4	168.3*114.3 6.625*4.500	300 2.07	2-M12*75	203 7.992	235 9.252	50 1.969
200*150 8*6	219.1*168.3 8.625*6.625	300 2.07	2-M16*100	264 10.394	313 12.323	60 2.362

XGQT03 S

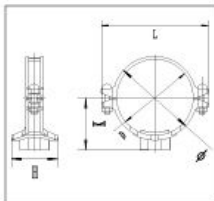
Mechanical Tee Threaded



Nominal Size mm/in	Pipe O.D mm/in	Working Pressure PSI/MPa	Bolt Size No.-Size mm	Dimensions mm/in				Hole cutting dimensions mm/in
				Ø	L	K	H	
40X25 1½x1	48.3X33.7 1.900x1.327	300 2.07	2-M10x45	67 2.637	112 4.409	56 2.204	61 2.401	32 1.259
50X25 2x1	60.3X33.7 2.375x1.327	300 2.07		75 2.953	116 4.567	60 2.362	69 2.717	38 1.496
50X32 2x1½	60.3X42.4 2.375x1.669	300 2.07	2-M10x55	75 2.953	116 4.567	60 2.362	69 2.717	46 1.811
50X40 2x1½	60.3X48.3 2.375x1.900	300 2.07		75 2.953	116 4.567	60 2.362	69 2.717	46 1.811
65X32 2½x1¼	73X42.4 2.87x1.669	300 2.07		93 3.661	144 5.669	70 2.755	84 3.307	46 1.811
65X40 2½x1¼	73X48.3 2.87x1.900	300 2.07		93 3.661	144 5.669	70 2.755	83 3.267	51 2.007
65X25 2½x1	76.1X33.7 2.996x1.327	300 2.07		102 4.016	144 5.669	70 2.756	77 3.031	38 1.496
65X32 2½x1¼	76.1X42.4 2.996x1.669	300 2.07		102 4.016	144 5.669	70 2.756	83 3.268	46 1.811
65X40 2½x1½	76.1X48.3 2.996x1.900	300 2.07		102 4.016	144 5.669	70 2.756	83 3.268	51 2.008
80X25 3x1	88.9X33.7 3.500x1.327	300 2.07		114 4.488	152 5.984	82 3.228	77 3.031	38 1.496
80X32 3x1¼	88.9X42.4 3.500x1.669	300 2.07		114 4.488	152 5.984	82 3.228	83 3.268	46 1.811
80X40 3x1½	88.9X48.3 3.500x1.900	300 2.07		114 4.488	152 5.984	82 3.228	92 3.622	51 2.008
80X50 3x2	88.9X60.3 3.500x2.375	300 2.07		114 4.488	152 5.984	82 3.228	99 3.898	61 2.402
100X25 4x1	108.0X33.7 4.252x1.327	300 2.07		135 5.315	172 6.772	87 3.425	77 3.031	38 1.496
100X32 4x1¼	108.0X42.4 4.252x1.669	300 2.07	2-M12x65	135 5.315	172 6.772	87 3.425	83 3.268	46 1.811
100X40 4x1½	108.0X48.3 4.252x1.900	300 2.07		135 5.315	172 6.772	87 3.425	92 3.622	51 2.008
100X50 4x2	108.0X60.3 4.252x2.375	300 2.07		135 5.315	172 6.772	87 3.425	97 3.819	61 2.402
100X65 4x2½	108.0X76.1 4.252x2.996	300 2.07		135 5.315	172 6.772	87 3.425	112 4.409	70 2.756
100X25 4x1	114.3X33.7 4.500x1.327	300 2.07		140 5.512	188 7.402	93 3.661	77 3.031	38 1.496
100X32 4x1¼	114.3X42.4 4.500x1.669	300 2.07		140 5.512	188 7.402	93 3.661	83 3.268	46 1.811
100X40 4x1½	114.3X48.3 4.500x1.900	300 2.07		140 5.512	188 7.402	93 3.661	92 3.622	51 2.008
100X50 4x2	114.3X60.3 4.500x2.375	300 2.07		140 5.512	188 7.402	93 3.661	97 3.819	61 2.402
100X65 4x2½	114.3X76.1 4.500x2.996	300 2.07		140 5.512	188 7.402	93 3.661	112 4.409	81 3.189
100X80 4x3	114.3X88.9 4.500x3.500	300 2.07		140 5.512	188 7.402	93 3.661	122 4.803	86 3.386
125X25 5x1	133.0X33.7 5.236x1.327	300 2.07		160 6.299	210 8.268	100 3.937	77 3.031	38 1.496
125X32 5x1¼	133.0X42.4 5.236x1.669	300 2.07		160 6.299	210 8.268	100 3.937	83 3.268	46 1.811
125X40 5x1½	133.0X48.3 5.236x1.900	300 2.07		160 6.299	210 8.268	100 3.937	92 3.622	51 2.008
125X50 5x2	133.0X60.3 5.236x2.375	300 2.07		160 6.299	210 8.268	100 3.937	97 3.819	61 2.402
125X65 5x2½	133.0X76.1 5.236x2.996	300 2.07	2-M16x75	160 6.299	210 8.268	100 3.937	112 4.409	81 3.189
125X80 5x3	133.0X88.9 5.236x3.500	300 2.07		160 6.299	210 8.268	100 3.937	122 4.803	86 3.386
125X25 5x1	139.7X33.7 5.500x1.327	300 2.07		168 6.614	220 8.661	107 4.213	77 3.031	38 1.496
125X32 5x1¼	139.7X42.4 5.500x1.669	300 2.07		168 6.614	220 8.661	107 4.213	83 3.268	46 1.811
125X40 5x1½	139.7X48.3 5.500x1.900	300 2.07		168 6.614	220 8.661	107 4.213	92 3.622	51 2.008
125X50 5x2	139.7X60.3 5.500x2.375	300 2.07		168 6.614	220 8.661	107 4.213	97 3.819	61 2.402

XGQT03 S

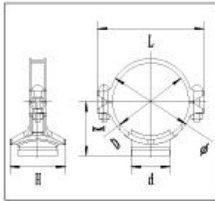
Mechanical Tee Threaded



Nominal Size mm/in	Pipe O.D mm/in	Working Pressure PSI/MPa	Bolt Size No.-Size mm	Dimensions mm/in				Hole cutting dimensions mm/in
				Ø	L	K	H	
125x65	139.7x76.1	300	2-M16x75	168	220	107	112	81
	5.500x2.996	2.07		6.614	8.661	4.213	4.409	3.189
125x80	139.7x88.9	300	2-M16x75	168	220	107	122	86
	5.500x3.500	2.07		6.614	8.661	4.213	4.803	3.386
150x25	159.0x33.7	300		187	242	117	77	38
	6.260x1.327	2.07		7.362	9.528	4.606	3.031	1.496
150x32	159.0x42.4	300		187	242	117	83	46
	6.260x1.669	2.07		7.362	9.528	4.606	3.268	1.811
150x40	159.0x48.3	300		187	242	117	92	51
	6.260x1.900	2.07		7.362	9.528	4.606	3.622	2.008
150x50	159.0x60.3	300		187	242	117	97	61
	6.260x2.375	2.07		7.362	9.528	4.606	3.819	2.402
150x65	159.0x76.1	300		187	242	117	112	81
	6.260x2.996	2.07		7.362	9.528	4.606	4.409	3.189
150x80	159.0x88.9	300		187	242	117	122	86
	6.260x3.500	2.07		7.362	9.528	4.606	4.803	3.386
150x25	165.1x33.7	300		194	247	125	77	38
	6.500x1.327	2.07		7.638	9.724	4.921	3.031	1.496
150x32	165.1x42.4	300		194	247	125	83	46
	6.500x1.669	2.07		7.638	9.724	4.921	3.268	1.811
150x40	165.1x48.3	300		194	247	125	92	51
	6.500x1.900	2.07		7.638	9.724	4.921	3.622	2.008
150x50	165.1x60.3	300	2-M16x85	194	247	125	97	61
	6.500x2.375	2.07		7.638	9.724	4.921	3.819	2.402
150x65	165.1x76.1	300		194	247	125	112	81
	6.500x2.996	2.07		7.638	9.724	4.921	4.409	3.189
150x80	165.1x88.9	300		194	247	125	122	86
	6.500x3.500	2.07		7.638	9.724	4.921	4.803	3.386
150x100	165.1x114.3	300		194	247	125	134	114
	6.500x4.500	2.07		7.638	9.724	4.921	5.276	4.488
150x25 6x1	168.3x33.7	300		198	247	120	77	38
	6.625x1.327	2.07		7.795	9.724		3.031	1.496
150x32 6x1½	168.3x42.4	300		198	247	120	82	46
	6.625x1.669	2.07		7.795	9.724	4.724	3.228	1.811
150x40 6x1½	168.3x48.3	300		198	247	120	92	51
	6.625x1.900	2.07		7.795	9.724	4.724	3.622	2.007
150x50 6x2	168.3x60.3	300		198	247	120	98	61
	6.625x2.375	2.07		7.795	9.724	4.724	3.858	2.401
150x65	168.3x76.1	300		198	247	120	121	82
	6.625x2.996	2.07		7.795	9.724	4.724	4.763	3.228
150x80 6x3	168.3x88.9	300		198	247	120	134	86
	6.625x3.500	2.07		7.795	9.724	4.724	5.275	3.385
200x25 8x1	219.1x33.7	300		250	310	146	77	46
	8.625x1.327	2.07		9.843	12.205	5.748	3.031	1.811
200x32 8x1½	219.1x42.4	300		250	310	146	83	46
	8.625x1.669	2.07		9.843	12.205	5.748	3.268	1.811
200x40 8x1½	219.1x48.3	300		250	310	146	92	51
	8.625x1.900	2.07		9.843	12.205	5.748	3.622	2.008
200x50 8x2	219.1x60.3	300	2-M16x100	250	310	146	97	61
	8.625x2.375	2.07		9.843	12.205	5.748	3.819	2.402
200x65	219.1x76.1	300		250	310	146	112	81
	8.625x2.996	2.07		9.843	12.205	5.748	4.409	3.189
200x80 8x3	219.1x88.9	300		250	310	146	122	86
	8.625x3.500	2.07		9.843	12.205	5.748	4.803	3.386
200x100 8x4	219.1x114.3	300		250	310	146	134	114
	8.625x4.500	2.07		9.843	12.205	5.748	5.276	4.488
250x40 10x1½	273.0x48.3	300		309	376	174	92	51
	10.748x1.900	2.07		9.843	12.205	5.748	3.622	2.008
250x50 10x2	273.0x60.3	300		309	376	174	97	61
	10.748x2.375	2.07		9.843	12.205	5.748	3.819	2.402
250x65	273.0x76.1	300	2-M22x130	309	376	174	112	81
	10.748x2.996	2.07		9.843	12.205	5.748	4.409	3.189
250x80 10x3	273.0x88.9	300		309	376	174	122	86
	10.748x3.500	2.07		9.843	12.205	5.748	4.803	3.386
250x100 10x4	273.0x114.3	300		309	376	174	134	114
	10.748x4.500	2.07		9.843	12.205	5.748	5.276	4.488

XGQT03

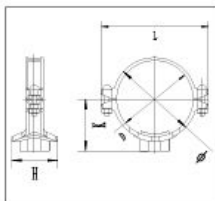
Mechanical Tee Grooved



Nominal Size mm/in	Pipe O.D mm/in	Working Pressure PSI/MPa	Bolt Size	Dimensions mm/in				Hole cutting dimensions mm/in
				No. - Size mm	Ø	L	K	
50X32 2X1 1/4	60.3X42.4	300	2-M10x55	74	116	59	69	46
	2.375X1.669	2.07		2.913	4.566	2.322	2.716	1.811
50X40 2X1 1/2	60.3X48.3	300	2-M10x55	78	116	59	69	46
	2.375X1.900	2.07		3.07	4.566	2.322	2.716	1.811
65x25 2 1/2x1	73x33.7	300	2-M10x55	93	144	70	77	38
	2.87x1.327	2.07		3.661	5.669	2.755	2.716	1.496
65x32 2 1/2x1 1/4	73x42.4	300	2-M10x55	93	144	70	84	46
	2.87x1.669	2.07		3.661	5.669	2.755	3.307	1.811
65X40 2 1/2x1 1/2	73x48.3	300	2-M10x55	93	144	70	83	51
	2.87x1.900	2.07		3.661	2.669	2.755	3.267	2.007
65x25 2 1/2x1	76.1X33.7	300	2-M10x55	93	144	70	77	38
	2.996X1.327	2.07		3.661	5.669	2.755	2.716	1.496
65x32 2 1/2x1 1/4	76.1X42.4	300	2-M10x55	93	144	70	84	46
	2.996X1.669	2.07		3.661	5.669	2.755	3.307	1.811
65x40 2 1/2x1 1/2	76.1X48.3	300	2-M10x55	93	144	70	83	51
	2.996X1.900	2.07		3.661	5.669	2.755	3.267	2.007
80x25 3x1	88.9x33.7	300	2-M12x65	104	152	76	78	38
	3.500X1.327	2.07		4.094	5.984	2.755	3.070	1.496
80x32 3X1 1/4	88.9x42.4	300	2-M12x65	104	152	76	82	46
	3.500X1.669	2.07		4.094	5.984	2.755	3.228	1.811
80x40 3X1 1/2	88.9x48.3	300	2-M12x65	104	152	77	91	51
	3.500X1.900	2.07		4.094	5.984	2.755	3.582	2.007
80x50 3x2	88.9x60.3	300	2-M12x65	114	152	82	97	61
	3.500X2.375	2.07		4.488	5.984	3.228	2.402	2.402
100x25 4x1	114.3x33.7	300	2-M12x65	133	188	93	77	35
	4.500X1.327	2.07		5.236	7.401	3.661	3.031	1.496
100x32 4X1 1/4	114.3x42.4	300	2-M12x65	133	188	93	83	46
	4.500X1.669	2.07		5.236	7.322	3.661	3.267	1.811
100x40 4X1 1/2	114.3x48.3	300	2-M12x65	133	188	93	92	51
	4.500X1.900	2.07		5.236	7.322	3.661	3.622	2.007
100x50 4x2	114.3x60.3	300	2-M12x65	140	188	93	97	61
	4.500X2.375	2.07		5.512	7.402	3.661	3.819	2.402
100x65 4x2 1/2	114.3x76.1	300	2-M12x65	140	188	93	112	81
	4.500X2.996	2.07		5.512	7.402	3.661	4.409	3.189
100x80 4x3	114.3x88.9	300	2-M12x65	140	188	93	122	86
	4.500X3.500	2.07		5.512	7.402	3.661	4.803	3.386
125x50 5.500x2.375	139.7x60.3	300	2-M16x75	168	220	107	97	61
	5.500X2.375	2.07		6.614	8.661	4.213	3.819	2.402
125x65 5.500x2.996	139.7x76.1	300	2-M16x75	168	220	107	112	81
	5.500X2.996	2.07		6.614	8.661	4.213	4.409	3.189
125x80 5.500x3.500	139.7x88.9	300	2-M16x75	168	220	107	122	86
	5.500X3.500	2.07		6.614	8.661	4.213	4.803	3.386
150x65 6.260x2.996	159.0x76.1	300	2-M16x75	168	220	107	112	81
	6.260X2.996	2.07		6.614	8.661	4.213	4.409	3.189
150x80 6.260x3.500	159.0x88.9	300	2-M16x75	168	220	107	122	86
	6.260X3.500	2.07		7.362	9.528	4.606	4.803	3.386
150x100 6.260x4.250	159.0x108.0	300	2-M16x75	168	220	107	134	114
	6.260X4.250	2.07		7.362	9.528	4.606	5.276	4.488
150x100 6.260x4.500	159.0x114.3	300	2-M16x75	168	220	107	134	114
	6.260X4.500	2.07		7.362	9.528	4.606	5.276	4.488
150x50 6.500x2.375	165.1x60.3	300	2-M16x85	194	247	125	97	61
	6.500X2.375	2.07		7.638	9.724	4.921	3.819	2.402
150x65 6.500x2.996	165.1x76.1	300	2-M16x85	194	247	125	112	81
	6.500X2.996	2.07		7.638	9.724	4.921	4.409	3.189
150x80 6.500x3.500	165.1x88.9	300	2-M16x85	194	247	125	122	86
	6.500X3.500	2.07		7.638	9.724	4.921	4.803	3.386
150x100 6.500x4.250	165.1x114.3	300	2-M16x85	194	247	125	134	114
	6.500X4.250	2.07		7.638	9.724	4.921	5.276	4.488
150x32 6x1 1/4	168.3x42.4	300	2-M16x85	198	247	128	82	46
	6.625X1.669	2.07		7.795	9.724	5.039	3.228	1.811
150x40 6x1 1/2	168.3x48.3	300	2-M16x85	198	247	128	92	51
	6.625X1.900	2.07		7.795	9.724	5.039	3.622	2.007
150x50 6x2	168.3x60.3	300	2-M16x85	198	247	128	98	61
	6.625X2.375	2.07		7.795	9.724	5.039	3.858	2.401
150x65 6x2 1/2	168.3x76.1	300	2-M16x85	198	247	128	121	82
	6.625X2.996	2.07		7.795	9.724	5.039	4.763	3.228
150x80 6x3	168.3x88.9	300	2-M16x85	198	247	128	134	86
	6.625X3.500	2.07		7.795	9.724	5.039	5.275	3.385
150x100 6x4	168.3x114.3	300	2-M16x85	198	247	128	157	114
	6.625X4.500	2.07		7.795	9.724	5.039	6.181	4.488
200x50 8x2	219.1x60.3	300	2-M16x100	250	310	146	97	61
	8.625X2.375	2.07		9.843	12.205	5.748	3.819	2.402
200x65 8x2 1/2	219.1x76.1	300	2-M16x100	250	310	146	112	81
	8.625X2.996	2.07		9.843	12.205	5.748	4.409	3.189
200x80 8x3	219.1x88.9	300	2-M16x100	250	310	146	122	86
	8.625X3.500	2.07		9.843	12.205	5.748	4.803	3.386
200x100 8x4	219.1x108.0	300	2-M16x100	250	310	146	134	114
	8.625X4.250	2.07		9.843	12.205	5.748	5.276	4.488
200x100 8x4	219.1x114.3	300	2-M16x100	250	310	146	134	114
	8.625X4.500	2.07		9.843	12.205	5.748	5.276	4.488
200x150 8x6	219.1x165.1	300	2-M16x100	309	376	174	214	160
	8.625X6.500	2.07		12.165	14.803	6.850	8.425	6.299
250x100 10x4	273.0x114.3	300	2-M22x130	309	376	174	134	114
	10.748X4.500	2.07		12.165	14.803	6.850	5.276	4.488
250x125 8x6	273.0x139.7	300	2-M22x130	309	376	174	186	135
	10.748X6.500	2.07		12.165	14.803	6.850	7.323	5.315

XGQT03

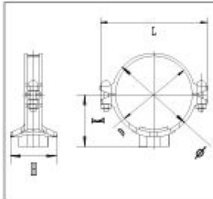
V-Mechanical Tee Grooved



Nominal Size mm/in	Pipe O.D mm/in	Working Pressure PSI/MPa	Bolt Size	Dimensions mm/in				Hole cutting dimensions mm/in
				No.-Size mm	Ø	L	K	
50x32 2x1¼	60.3x42.4	300	2-M10x55	75	116	68	85	51
	2.375x1.669	2.07		2.953	4.567	2.677	3.346	2.007
50x40 2x1½	60.3x48.3	300	2-M10x55	75	116	68	85	51
	2.375x1.900	2.07		2.953	4.567	2.677	3.346	2.007
65x32 2½x1¼	73x42.4	300	2-M12x60	93	144	75	84	51
	2.87x1.669	2.07		3.661	5.669	2.952	3.307	2.007
65x40 2½x1½	73x48.3	300	2-M12x60	93	144	75	84	51
	2.87x1.900	2.07		3.661	5.669	2.952	3.307	2.007
80x32 3x1¼	88.9x42.4	300		114	152	83	84	51
	3.500x1.669	2.07		4.488	5.984	3.267	3.307	2.007
80x40 3x1½	88.9x48.3	300		114	152	83	84	51
	3.500x1.900	2.07		4.488	5.984	3.267	3.307	2.007
80x50 3x2	88.9x60.3	300		114	152	83	102	51
	3.500x2.375	2.07		4.488	5.984	3.267	4.015	2.007
100x32 4x1¼	114.3x42.4	300	2-M12x65	140	180	98	84	51
	4.500x1.669	2.07		5.512	7.086	3.858	3.307	2.007
100x40 4x1½	114.3x48.3	300		140	180	98	84	51
	4.500x1.900	2.07		5.512	7.086	3.858	3.307	2.007
100x50 4x2	114.3x60.3	300		140	180	98	103	64
	4.500x2.375	2.07		5.512	7.086	3.858	4.055	2.519
100x65 4x2½	114.3x73	300		140	180	98	103	70
	4.500x2.875	2.07		5.512	7.086	3.858	4.055	2.756
150x32 6x1¼	168.3x42.4	300		198	247	120	82.000	51
	6.625x1.669	2.07		7.795	9.724	4.724	3.228	2.007
150x40 6x1½	168.3x48.3	300	2-M16x85	198	247	120	92.000	51
	6.625x1.900	2.07		7.795	9.724	4.724	6.622	2.007
150x50 6x2	168.3x60.3	300		198	250	125	108	64
	6.625x2.375	2.07		7.795	9.842	4.921	4.251	2.519
150x65 6x2½	168.3x73	300		198	250	125	108	70
	6.625x2.875	2.07		7.795	9.842	4.921	4.251	2.756

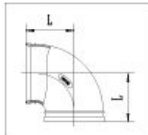
XGQT03 S

V-Mechanical Tee Threaded

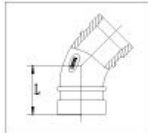


Nominal Size mm/in	Pipe O.D mm/in	Working Pressure PSI/MPa	Bolt Size	Dimensions mm/in				Hole cutting dimension s mm/in
				No.-Size mm	Ø	L	K	
50x25 2x1	60.3x33.7 2.375x1.327	300 2.07	2-M10x55	75	116	60	69	38
				2.953	4.567	2.362	2.717	1.496
50x32 2x1¼	60.3x42.4 2.375x1.669	300 2.07	2-M10x55	75	116	62	85	51
				2.953	4.567	2.441	3.346	2.007
50x40 2x1½	60.3x48.3 2.375x1.900	300 2.07	2-M10x55	75	116	60	69	51
				2.953	4.567	2.362	2.717	2.007
65x32 2½x1¼	73x42.4 2.87x1.669	300 2.07	2-M12x60	93	144	65	84	51
				3.661	5.669	2.559	3.307	2.007
65x40 2½x1½	73x48.3 2.87x1.900	300 2.07	2-M12x60	93	144	70	83	51
				3.661	5.669	2.755	3.267	2.007
80x25 3x1	88.9x33.7 3.500x1.327	300 2.07	2-M12x60	114	152	82	77	38
				4.488	5.984	3.228	3.031	1.496
80x32 3x1¼	88.9x42.4 3.500x1.669	300 2.07	2-M12x60	114	152	76	84	51
				4.488	5.984	2.992	3.307	2.007
80x40 3x1½	88.9x48.3 3.500x1.900	300 2.07	2-M12x60	114	152	82	92	51
				4.488	5.984	3.228	3.622	2.007
100x25 4x1	114.3x33.7 4.500x1.327	300 2.07	2-M12x65	140	188	93	77	38
				5.512	7.402	3.661	3.031	1.496
100x32 4x1¼	114.3x42.4 4.500x1.669	300 2.07	2-M12x65	140	180	93	84	51
				5.512	7.086	3.661	3.307	2.007
100x40 4x1½	114.3x48.3 4.500x1.900	300 2.07	2-M12x65	140	188	93	92	51
				5.512	7.402	3.661	3.622	2.007
100x50 4x2	114.3x60.3 4.500x2.375	300 2.07	2-M12x65	140	180	93	103	64
				5.512	7.086	3.661	4.055	2.519
150x25 6x1	168.3x33.7 6.625x1.327	300 2.07	2-M16x85	198	247	120	77	38
				7.795	9.724	4.724	3.031	1.496
150x32 6x1¼	168.3x42.4 6.625x1.669	300 2.07	2-M16x85	198	247	120	82.000	51
				7.795	9.724	4.724	3.228	2.007
150x40 6x1½	168.3x48.3 6.625x1.900	300 2.07	2-M16x85	198	247	120	92.000	51
				7.795	9.724	4.724	6.622	2.007
150x50 6x2	168.3x60.3 6.625x2.375	300 2.07	2-M16x85	198	250	120	108	64
				7.795	9.842	4.724	4.251	2.519
150x65 6x2½	168.3x73 6.625x2.875	300 2.07	2-M16x85	198	250	122	108	70
				7.795	9.842	4.803	4.251	2.756

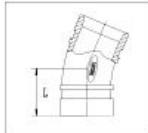
XGQT06
90° Elbow



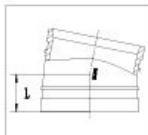
XGQT07
45° Elbow



XGQT09
22.5° Elbow



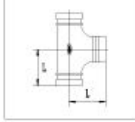
XGQT10
11.25° Elbow



Size	Pipe O.D.	90° Elbow		45° Elbow	22.5° Elbow	11.25° Elbow
		Standard	Short		Standard	
		L	L	L	L	
DN	mm	mm	mm	mm	mm	mm
in	in	in	in	in	in	in
25	33.7	57	57	38	41	35
1	1.315	2.24	2.244	1.496	1.61	1.377
32	42.4	70	60	44	44	35
1¼	1.660	2.755	2.362	1.732	1.732	1.377
40	48.3	70	60	44	44	35
1½	1.900	2.755	2.362	1.732	1.732	1.377
50	57.0	83	70	51	51	35
	2.244	3.267	2.755	2.007	2	1.377
50	60.3	83	70	51	51	35
2	2.375	3.267	2.755	2.007	2	1.377
65	73.0	95	76	57	51	38
2½	2.875	3.74	2.992	2.007	2	1.496
65	76.1	95	76	57	51	38
	3.000	3.74	2.992	2.007	2	1.496
80	88.9	108	86	64	57	38
3	3.500	4.251	3.386	2.519	2.244	1.496
100	108.0	127	101.5	76	73	44
	4.252	5	3.996	2.992	2.874	1.732
100	114.3	127	101.5	76	73	48
4	4.500	5	3.996	2.992	2.874	1.889
125	133.0	140	122	83	73	51
	5.250	5.511	4.803	3.267	2.874	2.007
125	139.7	140	122	83	73	51
	5.500	5.511	4.803	3.267	2.874	2.007
150	159.0	165	140	89	79	51
	6.260	6.496	5.511	3.503	3.11	2.007
150	165.1	165	140	89	79	51
	6.500	6.496	5.511	3.503	3.11	2.007
150	168.3	165	140	89	79	51
6	6.625	6.496	5.511	3.503	3.11	2.007
200	219.1	197	175	108	98	51
8	8.625	7.755	6.889	4.251	3.858	2.007
250	273.0	229	215	121	111	54
10	10.750	9.015	8.464	4.763	4.37	2.125
300	323.9	254	245	133	124	57
12	12.750	10	9.645	5.236	4.88	2.244
350	377.0	280	280	146	127	89
	14.843	11.024	11.024	5.748	5	3.503

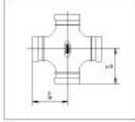
XGQT12

Tee



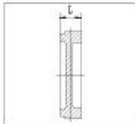
XGQT14

Cross



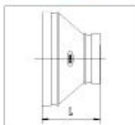
XGQT20

Cap



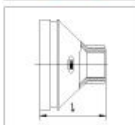
XGQT16

Reducer (grooved)



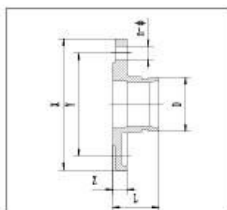
XGQT16 S

Reducer (threaded)



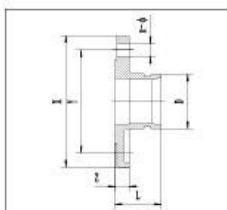
Size	Pipe O.D.	Tee		Cross	Eccentric Cap	Cap	Reducer grooved	Reducer threaded	Eccentric Reducer
		Standard	Short	Standard	L	L	L	L	L
		L	L	L	L	L	L	L	L
DN	mm	mm	mm	mm	mm	mm	mm	mm	mm
in	in	in	in	in	in	in	in	in	in
25	33.7	57	57	57	25	25	64	64	64
1	1.315	2.244	2.244	2.244	0.99	0.99	2.519	2.519	2.519
32	42.4	70	60	60	25	25	64	64	64
1¼	1.660	2.755	2.362	2.362	0.99	0.99	2.519	2.519	2.519
40	48.3	70	60	60	25	25	64	64	64
1½	1.900	2.755	2.362	2.362	0.99	0.99	2.519	2.519	2.519
50	57.0	83	70	70	25	25	64	64	64
	2.244	3.267	2.755	2.775	0.99	0.99	2.519	2.519	2.519
50	60.3	83	70	70	25	25	64	64	64
2	2.375	3.267	2.755	2.755	0.99	0.99	2.519	2.519	2.519
65	73.0	95	76	76	25	25	64	64	64
2½	2.875	3.74	2.992	2.992	0.99	0.99	2.519	2.519	2.519
65	76.1	95	76	76	25	25	64	64	64
	3.000	3.74	2.992	2.992	0.99	0.99	2.519	2.519	2.519
80	88.9	108	86	86	25	25	64	64	64
3	3.500	4.251	3.386	3.326	0.99	0.99	2.519	2.519	2.519
100	108.0	127	101.5	101.5	25	25	76	76	76
	4.252	5	3.996	3.996	0.99	0.99	2.99	2.99	2.99
100	114.3	127	101.5	101.5	25	25	76	76	76
4	4.500	5	3.996	3.996	0.99	0.99	2.99	2.99	2.99
125	133.0	140	122	122	25	25	89	89	89
	5.250	5.511	4.803	4.803	0.99	0.99	3.504	3.504	3.504
125	139.7	140	122	122	25	25	89	89	89
5	5.500	5.511	4.803	4.803	0.99	0.99	3.504	3.504	3.504
150	159.0	165	140	140	25	25	102	102	102
	6.260	6.496	5.511	5.511	0.99	0.99	4.015	4.015	4.015
150	165.1	165	140	140	25	25	102	102	102
	6.500	6.496	5.511	5.511	0.99	0.99	4.015	4.015	4.015
150	168.3	165	140	140	25	25	102	102	102
6	6.625	6.496	5.511	5.511	0.99	0.99	4.015	4.015	4.015
200	219.1	197	175	175	30	30	127	127	127
8	8.625	7.755	6.889	6.889	1.181	1.181	5	5	5
250	273.0	229	215	215	32	32	152		
10	10.750	9.015	8.464	8.464	1.259	1.259	5.98		
300	323.9	254	245	245	32	32	178		
12	12.750	10	9.645	9.645	1.259	1.259	7		
350	377.0	280	280	280	40	40	160		
	14.843	11.024	11.024	11.024	1.575	1.575	6.299		

XGQT18 Flange Adaptor



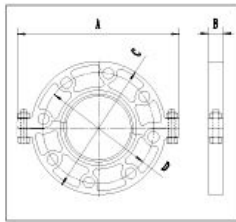
Nominal Size mm/in	Pipe O.D mm/in D	Working Pressure PSI/MPa	Dimensions mm/in				Bolt Size No.-Size mm
			L mm/in	X mm/in	Y mm/in	Z mm/in	
50 2	60.3 2.375	230 1.6	60.3 2.37	165 6.496	125 4.92	16 0.629	4-M16
65 2½	73.0 2.875	230 1.6	60.3 2.37	185 7.283	145 5.70	16 0.629	4-M16
65 2½	76.1 3.000	230 1.6	60.3 2.37	185 7.283	145 5.70	16 0.629	4-M16
80 3	88.9 3.500	230 1.6	60.3 2.37	200 7.874	160 6.29	16 0.629	8-M16
100 4	108.0 4.250	230 1.6	70 2.755	220 8.661	180 7.08	16 0.629	8-M16
100 4	114.3 4.500	230 1.6	70 2.755	220 8.661	180 7.08	16 0.629	8-M16
125 5	133.0 5.250	230 1.6	60.3 2.37	250 9.842	210 8.26	18 0.708	8-M16
125 5	139.7 5.500	230 1.6	60.3 2.37	250 9.842	210 8.26	18 0.708	8-M16
150 6	159.0 6.250	230 1.6	70 2.755	285 11.22	240 9.448	18 0.708	8-M20
150 6	165.1 6.500	230 1.6	70 2.755	285 11.22	240 9.448	18 0.708	8-M20
150 6	168.3 6.625	230 1.6	70 2.755	285 11.22	240 9.448	18 0.708	8-M20
200 8	219.1 8.625	230 1.6	76.1 2.99	340 13.38	295 11.61	19 0.748	12-M20
250 10	273.0 10.750	230 1.6	85 3.346	405 15.944	355 13.97	21 0.826	12-M24
300 12	323.9 12.750	230 1.6	90 3.543	460 18.11	410 16.14	24 0.944	12-M24
350 14	377.0 14.843	230 1.6	100 3.937	520 20.47	470 18.50	26 1.02	16-M24

XGQT18 Flange Adaptor ANSI-Class 150



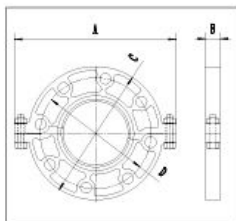
Nominal Size mm/in	Pipe O.D mm/in D	Working Pressure PSI/MPa	Dimensions mm/in				Bolt Size No.-Size mm
			L mm/in	X mm/in	Y mm/in	Z mm/in	
50 2	60.3 2.375	300 2.07	60.3 2.37	152 5.98	120.5 4.744	19 0.748	4-M16
65 2½	73.0 2.875	300 2.07	60.3 2.37	178 7.00	139.5 5.683	24 0.944	4-M16
80 3	88.9 3.500	300 2.07	60.3 2.37	190 7.48	152.5 6.00	24 0.944	4-M16
100 4	114.3 4.500	300 2.07	70 ⁸ 2.755	229 9.015	190.5 7.5	24 0.944	8-M16
125 5	139.7 5.500	300 2.07	70 2.755	254 10	216 8.503	24 0.944	8-M20
150 6	168.3 6.625	300 2.07	70 2.755	279 10.98	241.5 9.507	25 0.984	8-M20
200 8	219.1 8.625	300 2.07	76.1 2.99	343 13.50	298.5 11.751	29 1.141	8-M20
250 10	273.0 10.750	300 2.07	85 3.346	406 15.98	362 14.251	30 1.181	12-M22
300 12	323.9 12.750	300 2.07	90 3.543	483 19.01	432 17.00	32 1.259	12-M22

XGQT19 Grooved Flange



Nominal Size mm/in	Pipe O.D mm/in	Working Pressure PSI/MPa	Dimensions mm/in				Bolt Size No.-Size mm
			A mm/in	B mm/in	C mm/in	D mm/in	
50 2	60.3 2.375	230 1.6	222 8.740	23 0.906	165 6.496	125 4.921	4-M16
65	76.1 3.000	230 1.6	240 9.448	23 0.906	185 7.283	145 5.708	4-M16
80 3	88.9 3.500	230 1.6	252 9.921	23 0.906	192 7.559	160 6.299	8-M16
100 4	114.3 4.500	230 1.6	248 9.763	23 0.906	220 8.661	180 7.086	8-M16
125	139.7 5.500	230 1.6	316 12.44	24 0.944	250 9.842	210 8.267	8-M16
150 6	168.3 6.625	230 1.6	346 13.622	24 0.944	285 11.22	240 9.448	8-M20
200 8	219.1 8.625	230 1.6	418 16.456	28 1.102	340 13.38	295 11.614	12-M20

XGQT19 Grooved Flange ANSI-Class 150



Nominal Size mm/in	Pipe O.D mm/in	Working Pressure PSI/MPa	Dimensions mm/in				Bolt Size No.-Size mm
			A mm/in	B mm/in	C mm/in	D mm/in	
50 2	60.3 2.375	300 2.07	206 8.110	22 0.866	152 5.984	121 4.763	4-M16
65 2½	73.0 2.875	300 2.07	230 9.055	22 0.866	178 7.007	140 5.511	4-M16
80 3	88.9 3.500	300 2.07	242 9.527	24 0.944	191 7.519	152 5.984	4-M16
100 4	114.3 4.500	300 2.07	280 11.023	24 0.944	229 9.015	191 7.519	8-M16
125 5	139.7 5.500	300 2.07	325 12.795	24.5 0.964	254 10	216 8.503	8-M20
150 6	168.3 6.625	300 2.07	345 13.583	24.5 0.964	282 11.102	241.5 9.508	8-M20
200 8	219.1 8.625	300 2.07	414.3 16.311	28 1.102	341.4 13.44	298.5 11.751	8-M20

Gasket Ring



Material Composition	Applicable Temperature	Application Scope
EPDM	-34℃—+150	Cold and hot water, non-oil gas, diluted acid, alkaline salt, and multi-chemicals (free of hydrocarbon). Oil-like mediums are forbidden.
Silicon rubber	-40℃—+177	Drinking water, hot water, high-temperature air and some high-temperature chemicals. Oil-like mediums are forbidden.
Nitrile rubber	-29℃—+82℃	Oil, mineral oil, plant oil, hot water, temperature over 65℃ is not allowed.

Notes: 1. Gasket rings of different materials will be used for different liquid mediums.
2. Products can be supplied as per Customers requirements.

Bolts and Nuts



Raw material of bolts and nuts are taken as 40 cr, and its mechanical properties should reach Gr.8.8 after hot-treatment. Only one wrench will be used during the installation, safely and firmly.

Hole Cutting Tool



- Stable feeding mechanism with the support of dovetail guide
- Three-phase motor, contributes to high efficiency

Grooving Machine



This machine is applicable for channeling of zinc-plated pipes, seamless pipes, stainless steel pipes and plastic-lined pipes of various sizes ranging from ϕ 33mm to ϕ 630mm.

Castings



Valve



